

Mfg. of Mechanical Seals, Rotary Joints, Pump Spares & Rubber Products.



Industries We Serve

- Petrochemicals
- Refineries
- Power Plant
- Fertilizers
- Pharma
- Marine
- Food & Beverages
- Chemical
- Pulps & Papers
- Textiles



THE COMPANY

Advil Industries has expanded into largest manufacturer of All types of Mechanical Seal, Rotary Joints (Rotary Unions, Roto Seal Coupling), Pump Spares and All types of Rubber Products. These products are usually appreciated for their unyielding construction, leakage proof, easy installation, low maintenance, stability, long service life and industry-driven designs. All our products are skillfully questioned on industry determined quality parameters before their dispatch. Owing to these factors we have been able to garner a huge customer base in the national & international market.

It has been our utmost priority to provide complete customer satisfaction by meeting the customer needs in the best possible way & by providing a product rich in quality & service life. With the use of latest design & manufacturing methodologies we provide our customers with a product encompassing their requirements and that too at an economical price. Manufactured with the best raw materials procured from reputed sources worldwide, Advil Industries comes with the assurance of flawless workmanship due to rigorous quality control checks at every stage of production.

Mechanical Seal

Single Coil Spring Unbalanced Seal(AI218)

Materials

- Seal Faces : Carbon, Ceramic , Silicon Carbide , Tungsten Carbide
- Secondary Seals : Viton/PTFE/GFT
- Metal Components : SS-316

Operating Limits

- Shaft Diameter : 25 to 100mm
- Pressure : up to 5 Bars
- Temperature : -50 to 150°C
- Speed : up to 2900 rpm max



Multi Spring Balanced Seal(AI204)

Materials

- Seal Faces : Carbon, Ceramic , Silicon Carbide , Tungsten Carbide
- Secondary Seals : Viton/PTFE/GFT
- Metal Components : SS-316

Operating Limits

- Shaft Diameter : 25 to 100mm
- Pressure : up to 5 Bars
- Temperature : -50 to 200°C
- Speed : up to 2900 rpm max



Teflon Bellow Seal(AI205)

Materials

- Seal Faces : Carbon, Ceramic , Silicon Carbide , Tungsten Carbide
- Secondary Seals : PTFE
- Metal Components : SS-316/Hast-C

Operating Limits

- Shaft Diameter : 18 to 100mm
- Pressure : up to 5 Bars
- Temperature : -20 to 80°C
- Speed : up to 2900 rpm max



Multi Spring Reversed Balanced Seal(AI219)

Materials

- Seal Faces : Carbon, Ceramic , Silicon Carbide , Tungsten Carbide
- Secondary Seals : Viton/PTFE/GFT
- Metal Components : SS-316

Operating Limits

- Shaft Diameter : 10 to 100mm
- Pressure : up to 10 Bars
- Temperature : -50 to 180°C
- Speed : up to 2900 rpm max



Elastomer Bellow Seal(AI214)

Materials

- Seal Faces : Carbon, Ceramic , Silicon Carbide , Tungsten Carbide
- Secondary Seals : Nitrile/Neoprene/Viton
- Metal Components : SS-304

Operating Limits

- Shaft Diameter : 10 to 100mm
- Pressure : up to 5 Bars
- Temperature : -20 to 80°C
- Speed : up to 2900 rpm max



Rubber Bellow Seal(AI233)

Materials

- Seal Faces : Carbon, Ceramic , Silicon Carbide , Tungsten Carbide
- Secondary Seals : Nitrile/Neoprene/Viton
- Metal Components : SS-304

Operating Limits

- Shaft Diameter : 10 to 100mm
- Pressure : up to 5 Bars
- Temperature : -20 to 80°C
- Speed : up to 2900 rpm max



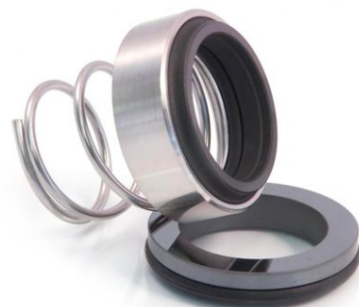
Conical Spring Seal(AI209)

Materials

- Seal Faces : Carbon, Ceramic , Silicon Carbide , Tungsten Carbide
- Secondary Seals : Viton/PTFE/GFT
- Metal Components : SS-316

Operating Limits

- Shaft Diameter : 10 to 100mm
- Pressure : up to 5 Bars
- Temperature : -50 to 180°C
- Speed : up to 2900 rpm max



Welded Ends Metal Bellow Seal(AI224)

Materials

- Seal Faces : Carbon, Ceramic , Silicon Carbide , Tungsten Carbide
- Secondary Seals : Viton/PTFE/GFT/Graphite
- Metal Components : SS-304
- Bellow Material : AM-305, Inconel 625

Operating Limits

- Shaft Diameter : 19 to 100mm
- Pressure : up to 10 Bars
- Temperature : -50 to 360°C
- Speed : up to 2900 rpm max



Agitator Double Seal(AI242)

Materials

- Seal Faces : Carbon, Ceramic , Silicon Carbide , Tungsten Carbide
- Secondary Seals : Nitrile/Neoprene/Viton/PTFE
- Metal Components : SS-304

Operating Limits

- Shaft Diameter : 40 to 200mm
- Pressure : up to 60 Bars
- Temperature : -20 to 300°C
- Speed : up to 150 rpm max



Cartridge Seal

Materials

- Seal Faces : Carbon, Ceramic , Silicon Carbide , Tungsten Carbide
- Secondary Seals : Viton/PTFE/GFT
- Metal Components : SS-316

Operating Limits

- Shaft Diameter : 25 to 150mm
- Pressure : up to 5 Bars
- Temperature : -50 to 180°C
- Speed : up to 2900 rpm max



Rotary Joint

Rotary Joint for Water Application

Materials

- Face Materials : Carbon, Silicon Carbide, Tungsten Carbide, Sterlite
- Metal Parts : SS 316, SS 304, Brass
- Elastomers : Viton, Silicon, TTV, PTFE.

Operating Limits

- Size : 3/8" To 6.0"
- Pressure : 15 Bars
- Temperature : 150°C
- Speed : 3500 rpm



Rotary Joint for Air Application

Materials

- Face Materials : Carbon, Silicon Carbide, Tungsten Carbide, Sterlite
- Metal Parts : Aluminum
- Elastomers : Viton, PTFE.

Operating Limits

- Size : 3/8" To 6.0"
- Pressure : 10 Bar Air, 0.07 Bar to 7 Kpa Vacuum
- Temperature : 150°C
- Speed : 2800 rpm



Rotary Joint for Hot Oil & Thermic Fluid Application

Materials

- Face Materials : Antimony Carbon
- Metal Parts : MS, SS 304
- Elastomers : Grafoil Gasket, Asbestos Gasket

Operating Limits

- Size : 0.5" To 6.0"
- Pressure : 07 Bars
- Temperature : 350°C
- Speed : 750 rpm



Rotary Joint for Hydraulic Application

Materials

- Face Materials : Carbon, Silicon Carbide
- Metal Parts : SS 316, SS 304, Brass, Gun Metal
- Elastomers : Viton, PTFE.

Operating Limits

- Size : 3/8" To 6.0"
- Pressure : 400 Bars
- Temperature : 150°C
- Speed : 1500 rpm



Rubber Products



All types of O rings



Butterfly Gasket



FBD Gasket



Silicon Autoclave Gasket



Silicon Bellow



Silicon Profiles



Silicon TC Gasket



Silicon Transparent Tube

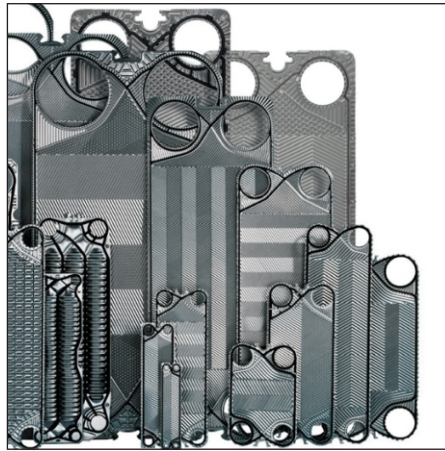


Silicon Sponge Gasket

Rubber and PTFE Products



Oil Seals



PHE Gaskets



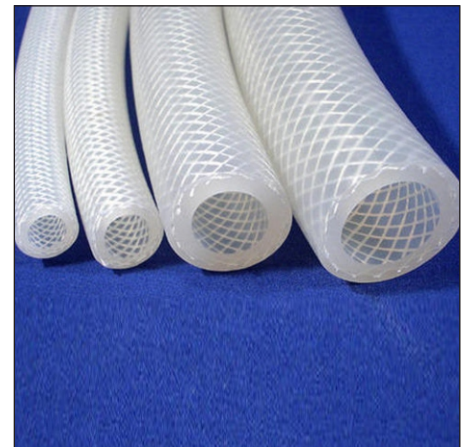
PTFE (Teflon Products)



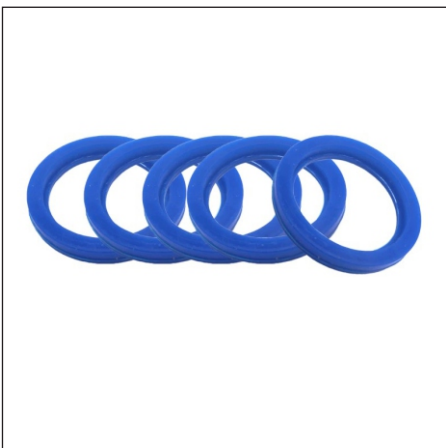
Rubber Diaphragm



Rubber Expansion Bellow



Silicon Braided Hose



SMS Union Gasket



Teflon Coated Diaphragm



Spider Coupling

Pump Spares

We are dealing in following brands of Pump Spares i.e. Kirloskar, KSB, Beacon, Johnson, Grundfos And Mather & Platt Pumps



Bearing Cover



Bearing Housing



Casing Cover



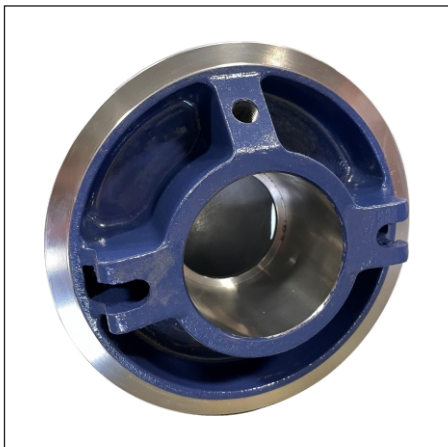
Impellar



Shaft Sleeves



Shaft



Stuffing Box



Wear Ring



Mfg. of Mechanical Seals, Rotary Joints, Pump Spares & Rubber Products.

Office : ID No 42, First Floor,
Below JVLR Bridge, Pillar Number B-19 ,
Station Road, Jogeshwari (West) Mumbai 400102

Mobile : +91 7304033275 / 77159 33275

Email : info@advilindustries.com

Website : www.advilindustries.com